

## Technical data Wall heating with plaster system

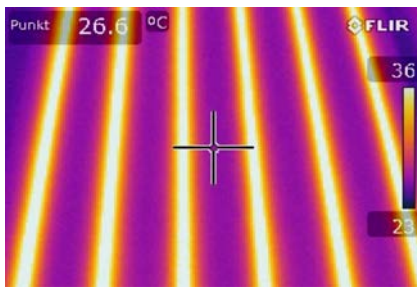
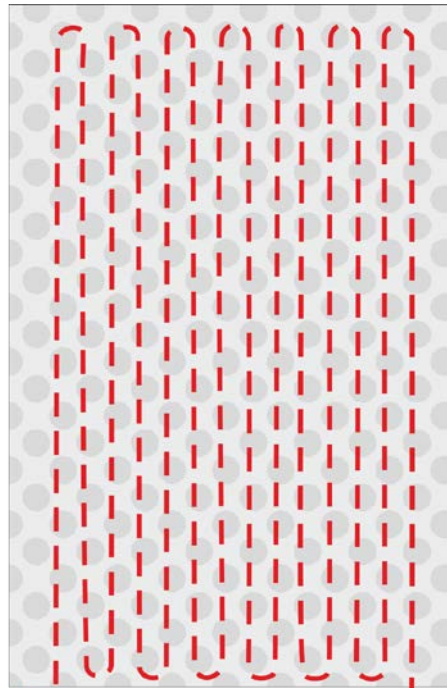
High output and rapid reaction - only 11 mm construction height

(without plaster thickness):

Each renderable wall surface can be activated as wall heating. Suitable are all approved by the manufacturers plaster materials, such as gypsum plaster, lime plaster or clay plaster.

### Your advantages:

- Low energy consumption
- Short heating-up times
- Ideal for renovations and modernizations
- Suitable for approved plaster materials
- Simple and fast installation
- Oxygen-tight according to DIN 4726



Thermography – uniform heat distribution



Safe plaster anchoring by honeycomb elements

flexiro	Heat output in [W/m <sup>2</sup> ] (for gypsum plaster and 15 mm pipe covering)							
	28°C		32°C		37°C		42°C	
Average heating temperature*	28°C		32°C		37°C		42°C	
*) We recommend a ΔT of 5K between flow and return for FLEXIRO ceiling heating	Room temperature		Room temperature		Room temperature		Room temperature	
	20°C	24°C	20°C	24°C	20°C	24°C	20°C	24°C
	42	20	65	42	96	71	127	102